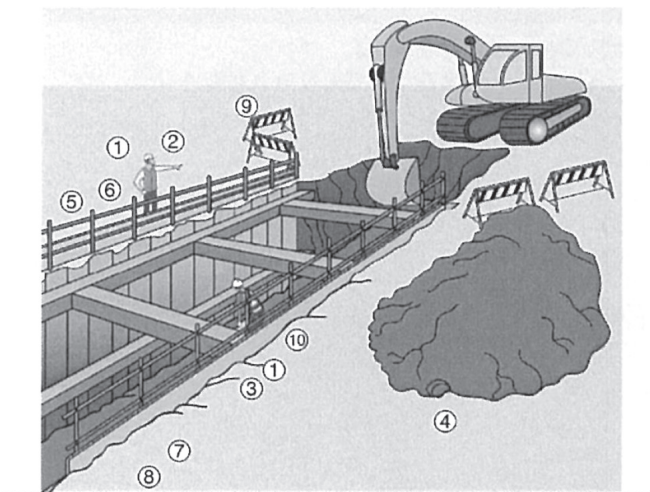


### III – 2. Shoring work



1. Has an operations chief been appointed for excavations over 2 m?
2. Is there a checklist related to cracks and falling rocks?
3. Is the shoring work carried out according to plan?
4. Is excavated soil put in a safe location?
5. Is there shoring and a guardrail where the depth is 1.5 m or greater?
6. Were the waling and struts installed early?
7. Has an operations chief been appointed?
8. Do you check the condition of the ground before starting work?  
Do you check the condition of the ground after rain and earthquakes?
9. Have barricades and Do Not Enter signs been put in place?
10. Are there any stairs?