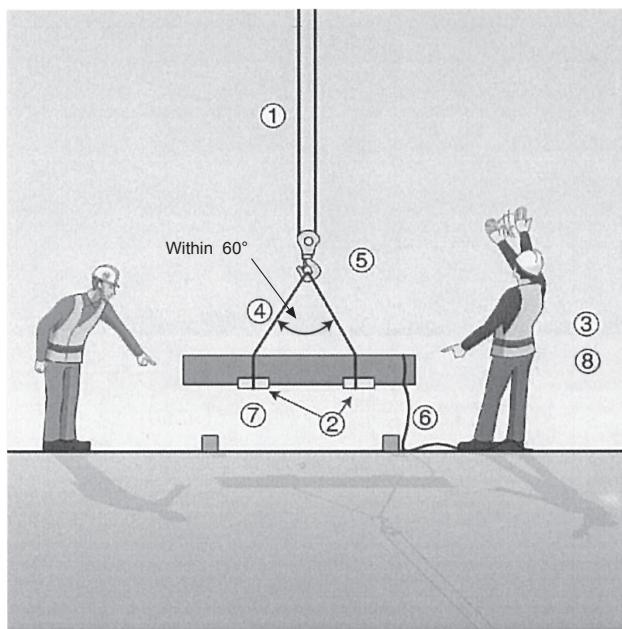


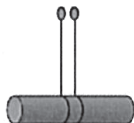
## V – 3 – 1 . Rigging operations



1. Do you avoid using damaged wire?
2. Do the corners of loads have sling protection?
3. Are riggers appropriately licensed?
4. Is the angle of the sling 60° or less?
5. Are loads hauled with more than one sling?
6. Are tag lines used for long loads?
7. Are operators stopping loads just after leaving the ground to check the stability?
8. Is work performed under the direction of a rigger chief?

## V – 3 – 2. Rigging operations

1. Single sling  
In principle, forbidden.

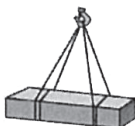
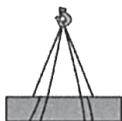


### Tag Line Use

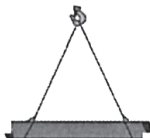
A tag line is used when lifting long materials.

It is used to prevent a load from swinging.

2. Double Wrap Basket Hitch  
The double wrap basket hitch is a safe way to lift long materials.



3. Choker Hitch  
The choker hitch is not advisable, because it bends the wire to a severe degree.



Tight hitch    Loose hitch

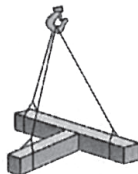
4. *Hakama*  
A strong bag is used.



6. Others



- Three leg sling



5. Wire net  
A wire net is used for lifting small materials.

